



FRANKLIN NEWSLETTER

2-28 FOREST STREET,
PO Box 83 TUMUT NSW 2720
Phone: (02) 6947 1533
Fax: (02) 6947 1377
franklin-p.school@det.nsw.edu.au
www.franklin-p.schools.nsw.edu.au

TERM 3 | Monday 31st August 2020 | ISSUE 7

Week 7

Monday 31st August

P&C Fathers Day stall

Tuesday 1st September

P&C Fathers Day stall

Fathers Day Stall

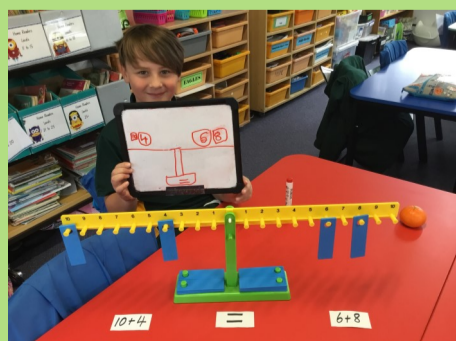
Franklin P&C Fathers Day stall is on Monday and Tuesday of this week. Please send any money in an envelope with your child's name on it.

Mobile Phones

Mobile phones should **ONLY** be sent to school with your child if it is necessary.

Becoming Mathematicians

The term "equivalent" in mathematics refers to two values, numbers or quantities which are the same. Equivalence is symbolised by the equals sign. We have balance beams in the K-2 classrooms that we use to check our answers and explain our strategies.



HONOURS 2020

Banks	Alexis McGrath, Eddie Johnson, Lacey Martin, Carter Coppin
Cook	Chayse Sanderson, Tasmin Li, Max Cichocki, Evie Wielinga
Bass	Anelise Van Ginkel, Xavier Gill, Kaden McMullen, Ruby Murdoch
Flinders	Jaimie Arnold, Deazel King, Heidi Lenser, Deuteronomy Tully
Hume	Blaze Bergen, Ruby Piper, Rose Pollack, Jacob Moy

STUDENT OF THE WEEK

Banks	Harley Giddings	Ivy Zerafa
Cook	Bridgette-Lee O'Keefe	Maddison Sutton
Bass	Talib Ford Judge	Ali Schubert
Flinders	Jorja Mackinnon Annetts	Ted Turner
Hume	Emmitt Rowe	Savannah Hepburn

POSITIVE BEHAVIOUR FOR LEARNING AWARDS

ACHIEVEMENT	Arabella Bellette	Ruby Piper
RESPECT	Lacey Martin	Riley Zerafa
SAFETY	Ethan Smith	Peppa-Jane Burkill



5/6 Lawson in Action

Students from Lawson read comics they had created to the Kindergarten students. The comics were about superheros! The Kindergarten students loved reading with their Year 5/6 buddies.



Here students in Lawson are constructing Lego Mindstorm Robots as a part of their robotics lesson. The students followed a procedure and then programmed their robots to perform different moves.



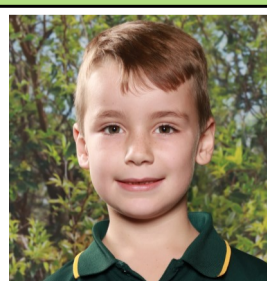
FRANKLIN STARS — Week 7

Students who follow our PBL school values of:

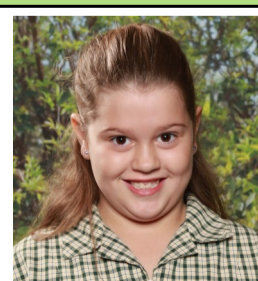
RESPECT ~ ACHIEVEMENT ~ SAFETY



**Evelyn
Cook**



**Jesse
Hume**



**Ella
Macarthur**

For our sports lessons we have been learning skills and drills for Winter sports then transitioning these skills into a game. We have been participating in fantastic sporting lessons this term.



TOGETHER WE LEARN

CELEBRATING FRANKLIN!

Fathers Day

Franklin P&C are holding their annual Fathers Day stall on Monday and Tuesday this week.

Items on sale are:

Dad Coffee Mug \$6 - Dad Stubby Holder \$6 - Anti-Stress Squeezie Face Ball \$2

Toffees \$2 - Hero Card \$1 - Thumbs Up 2 in 1 Keyring \$3

Dad's Metal Number Plate \$6 - Back Scratcher Shoe Horn \$2.50

Compact Screwdriver \$3.50

These will make great gifts for Dad!

There will also be raffle tickets on sale for \$1, the prize being the great raffle pack pictured.



Tell Them From Me Survey

This Term, our school will be participating in the Partners in Learning parent survey, another part of the Tell Them From Me suite of surveys (student, teacher and parent surveys) on student engagement. The survey asks parents and carers questions about different factors that are known to impact on student wellbeing and engagement.

Running this survey will help our school understand parents' and carers' perspectives on their child's experience at school. These include: communication between parents/carers and staff, activities and practices at home and parent/carer views on the school's support of learning and behaviour. This valuable feedback will help our school make practical improvements.

The survey is conducted entirely online on smartphones, iPads, tablets, laptops or computers. The survey will typically take 15 minutes or less to complete and is completely confidential. The parent survey will be conducted over Term 3 and early Term 4. Although participating in the survey is entirely voluntary, your responses are very much appreciated.

More information about the survey is available at: <http://surveys.cese.nsw.gov.au>. To access the survey for our school go to: <http://nsw.tellthemfromme.com/jc7vb>

The survey is available in 23 languages.

School Attendance

It is extremely important that your child arrives at school before the 9am bell, ready to start their learning. This gives students time to greet their friends and prepare for their day. Notes will be issued to all students who are late.

Franklin Walk-A-Thon

Franklin are having a Walk-A-Thon on Friday 11th September. Sponsorship cards went home two weeks ago and students are **NOT** encouraged to approach strangers for sponsorship.

Stage 1 are encouraged to walk 10 laps of the oval at Franklin, Stage 2 can walk 20 laps and Stage 3 can walk 30 laps.

All students who raise over \$20 in sponsorship will be in the running to be one of the two lucky students from each stage who will win \$50 Toyworld vouchers.



Aerosol Cans in School Bags

At Franklin we understand the need for deodorant as students get older, and we encourage the development of good personal hygiene practices.

However, aerosol cans of any kind are **NOT** allowed to be brought to school in student's bags. If your child would like to bring deodorant to school to freshen up during the day please ensure it is the **roll-on** variety only.

School Band

If your child is in band, please make sure they bring their musical instrument to school every Wednesday.



TOGETHER WE LEARN